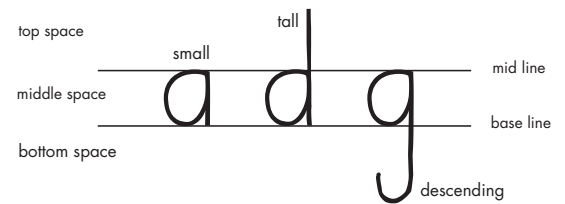


# WET-DRY-TRY

We place a lot of emphasis on placing letters correctly because it is essential for neat and fast printing. We teach on double lines because it is the easiest way to impart a sense for how letters should be placed. These Wet-Dry-Try activities on double lines are a great way to teach letter size and place. The image to the right gives you the basics of how we discuss letter size and placement. For additional information please see pages 30 and 48-49. Wet-Dry-Try activities appeal to all learning styles and is a fun way to practice letters.

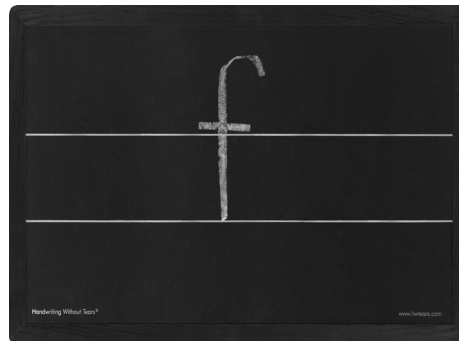


## HWT Blackboard with Double Lines

### Preparation

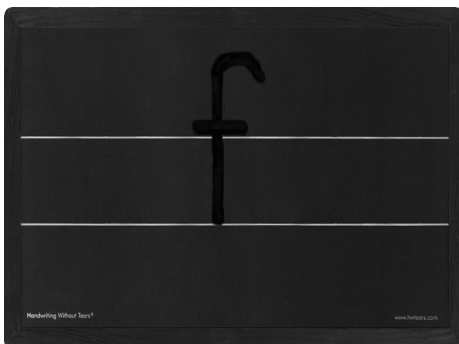
1. Prepare Blackboards with the letter you will be teaching.
2. Place Chalk Bits and Little Sponge Cubes around the room so children can reach them easily.

### Directions



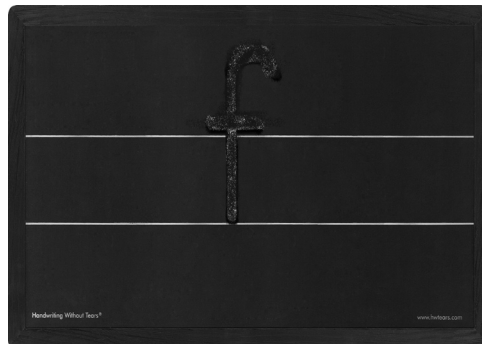
### DEMONSTRATE

Demonstrate correct letter formation.



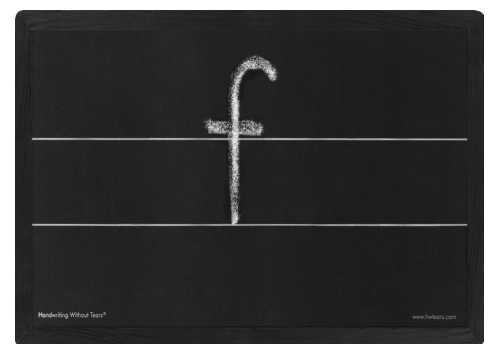
### WET

- Wet a Little Sponge Cube.
- Squeeze it out.
- Trace the letter with the sponge.
- Wet your finger and trace again.



### DRY

- Crumple a little paper towel.
- Dry the letter a few times.
- Gently blow for final drying.



### TRY

- Take a Little Chalk Bit.
- Use it to write the letter.

### Tips

- Use consistent words to describe the strokes. Match your verbal cues to the directions on the letter lesson pages of the workbook.
- Use Little Sponge Cubes and Chalk Bits, which help children develop proper pencil grip.
- Squeeze the sponge well or the letter will be too wet.
- This works best one-on-one or in centers with five or fewer students.
- To use this activity with the whole class, pre-mark students' chalkboards with the lowercase letter (so they have a correct model to wet), and then demonstrate once for everyone.
- To help children learn capital letter orientation and formation, use the Slate.

